

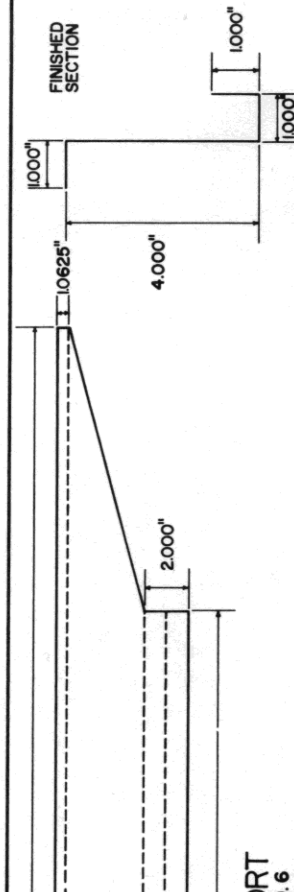
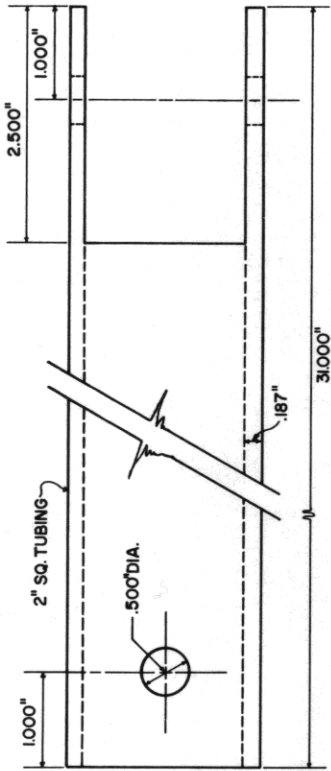
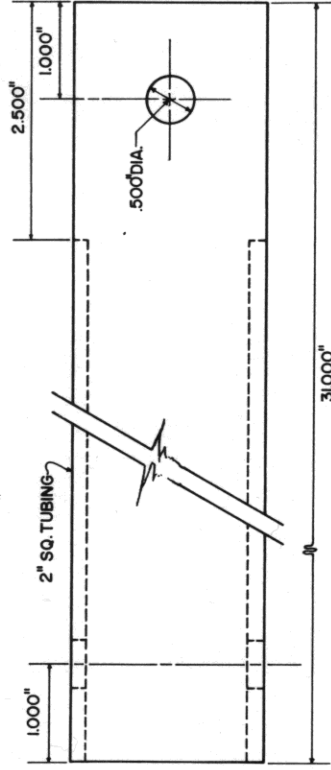
BASED ON UNIV. OF FLA. PLAN NO. 1081  
 COOPERATIVE EXTENSION WORK IN  
 AGRICULTURE AND HOME ECONOMICS

AND  
 UNITED STATES DEPARTMENT OF AGRICULTURE COOPERATING

NURSERY WAGON  
 FOUR WHEEL STEER

FLA. '78 6293 SHEET 1 OF 5

**HANDLE**  
1 REQ. PART NO. 25  
NOT TO SCALE



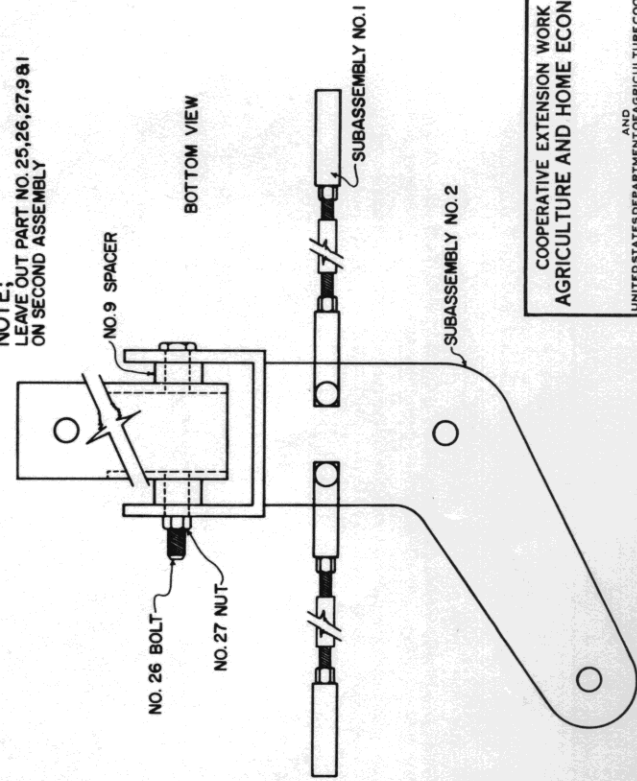
1) CUT OUT TWO PIECES FROM 16 GA. HR. STEEL  
2) BEND ON BROKEN LINES TO SECTION SHOWN.

**BED SUPPORT**  
2 REQ. PART NO. 6

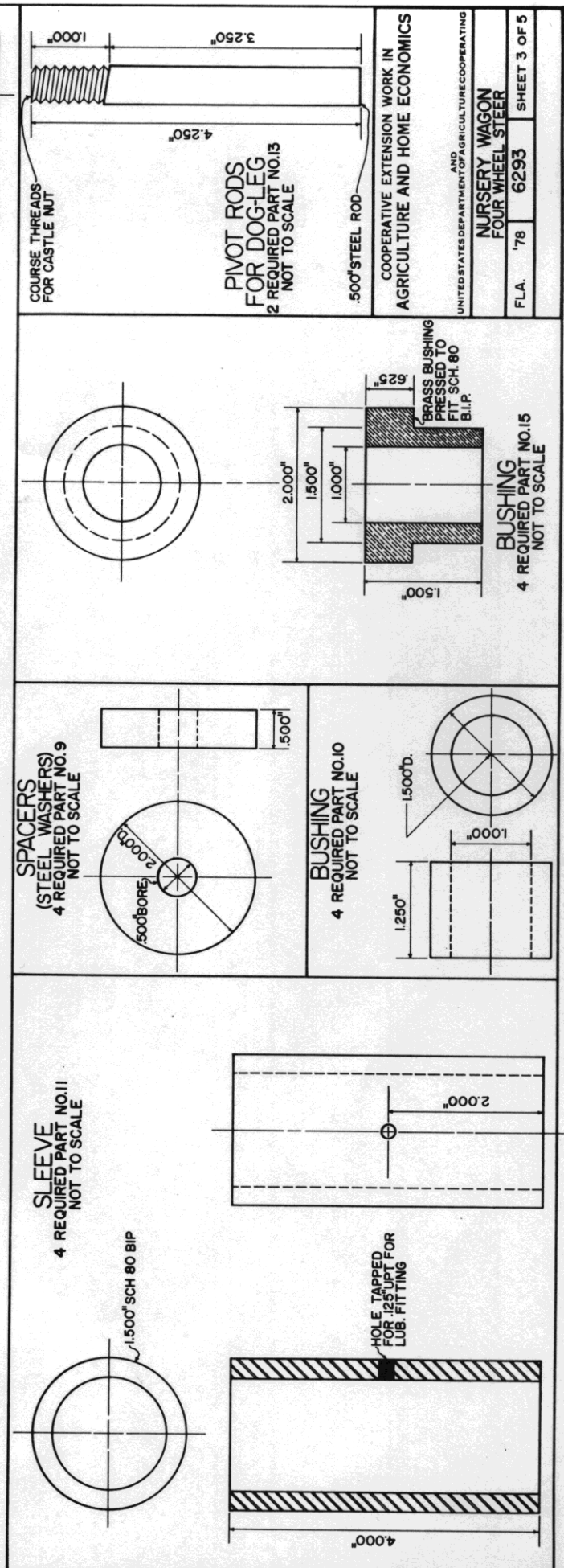
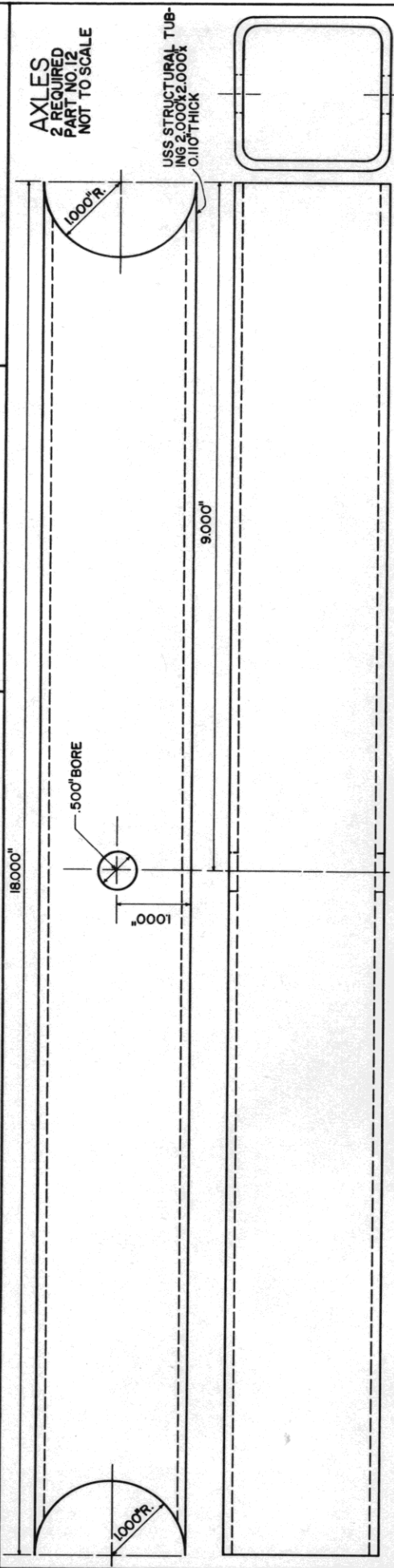
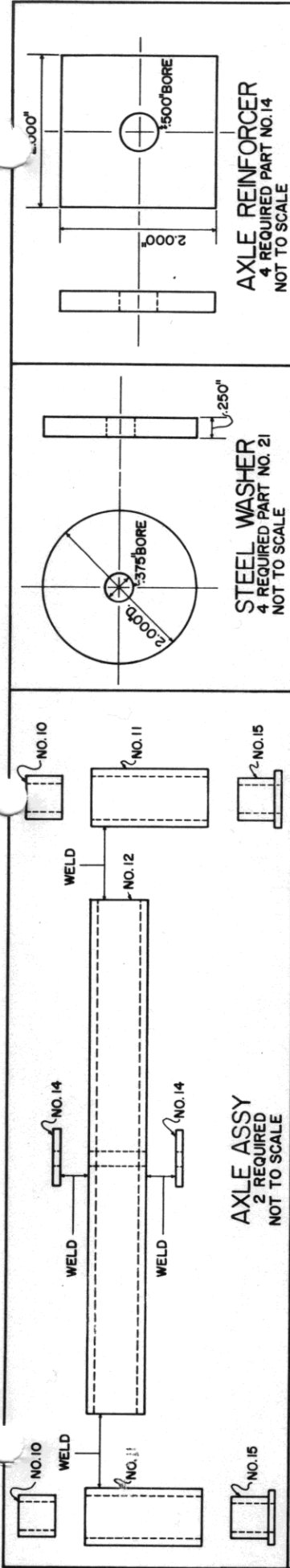
**PARTS LIST**

PART NUMBER	DESCRIPTION	NUMBER REQUIRED	P-PURCHASE M-MAKE
#1	TONGUE MOUNTING "U" PLATE	1	M
#2	WHEEL SHAFT	4	M
#3	DOG LEG PLATE	2	M
#4	STEERING ARM LEVER	4	M
#5	BED SUPPORT STIFFENER	2	M
#6	BED SUPPORT	2	M
#7	STEERING ROD	1	M
#8	TIE ROD	4	M
#9	SPACER	4	M
#10	SMALL BUSHING	4	M
#11	SLEEVE	4	M
#12	AXLE	2	M
#13	PIVOT ROD	2	M
#14	AXLE REINFORCER	4	M
#15	LARGE BUSHING	4	M
#16	TIE ROD END (INT. HARVESTER NO. 529 430-R1 OR EQUAL)	10	P
#17	1/2" N.F. 20 NUT	10	P
#18	1/2" x 1/2" N.F. 20 BOLT WITH HEAD REMOVED	10	P&M
#19	3/8" I.I.N.C. CASTLE NUT	4	P
#20	400 x 8 WHEEL AND TIRE WITH SELF LUBRICATING BEARINGS; 3/8" BORE ON OUTSIDE BEARING, 1" BORE ON INSIDE	4	P&M
#21	WASHER	4	M
#22	3/8" x 1/2" 16NC. CAP SCREW	4	P
#23	3/8" x 1/2" 11NC. CASTLE NUT	2	P
#24	WASHER-3/8" INSIDE BORE, 1" O.D., 1/8" THICK	4	P
#25	HANDLE	1	M
#26	1/2" x 4" N.F. 20 BOLT	1	P
#27	1/2" N.F. 20 NUT	1	P
#28	WASHER	4	M

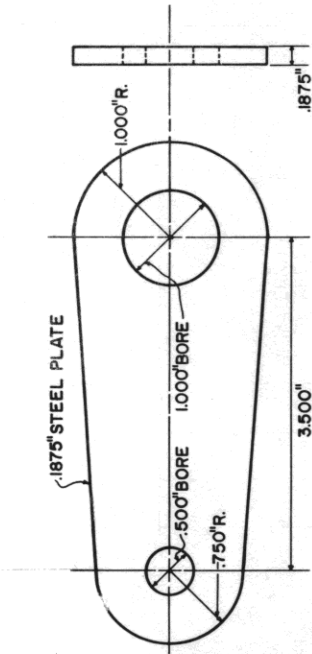
NOTE:  
LEAVE OUT PART NO. 25, 26, 27, 9 & 1  
ON SECOND ASSEMBLY



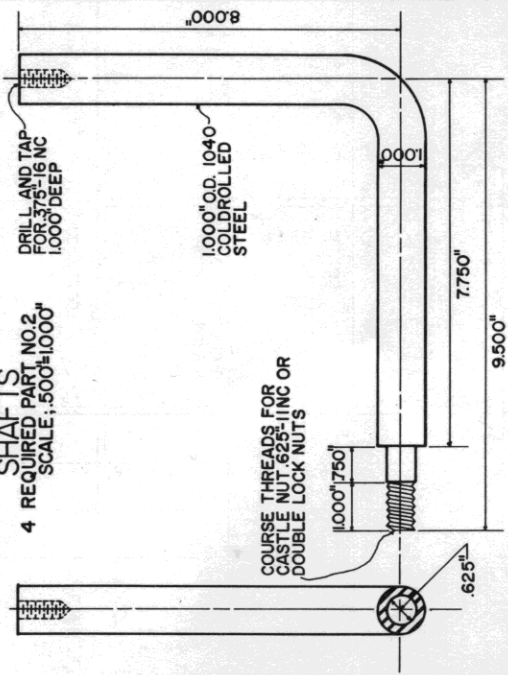
**HANDLE ASSEMBLY**  
2 REQUIRED



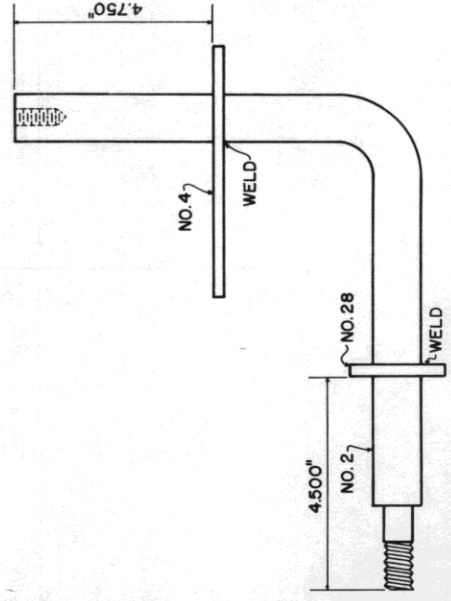
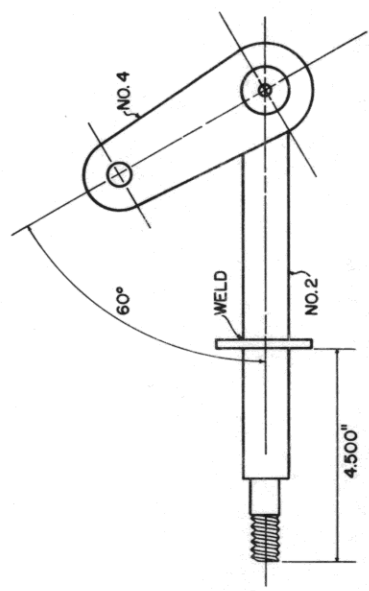
**STEERING ARM LEVER**  
4 REQUIRED PART NO. 4  
NOT TO SCALE



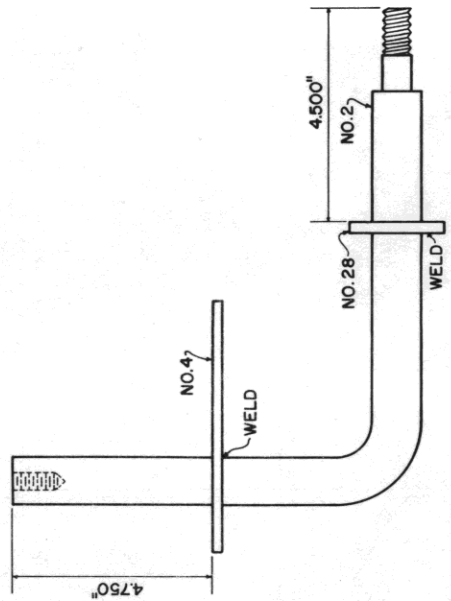
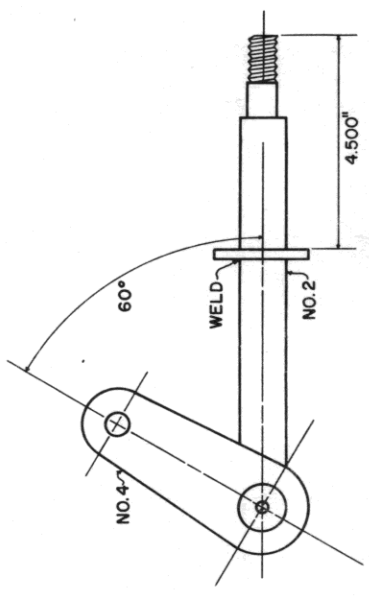
**SHAFTS**  
4 REQUIRED PART NO. 2  
SCALE: .500"=1.000"



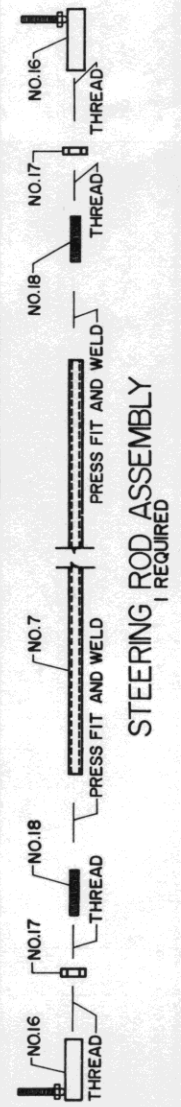
**LEFT FRONT & RIGHT REAR WHEEL SHAFT ASSY.**  
SCALE: .500"=1.000" INCH



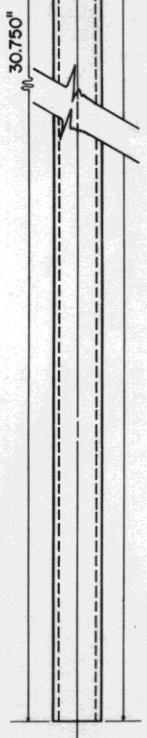
**RIGHT FRONT & LEFT REAR WHEEL SHAFT ASSY.**  
SCALE: .500"=1.000" INCH



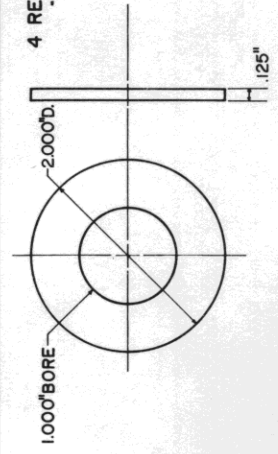
**STEERING ROD ASSEMBLY**  
1 REQUIRED



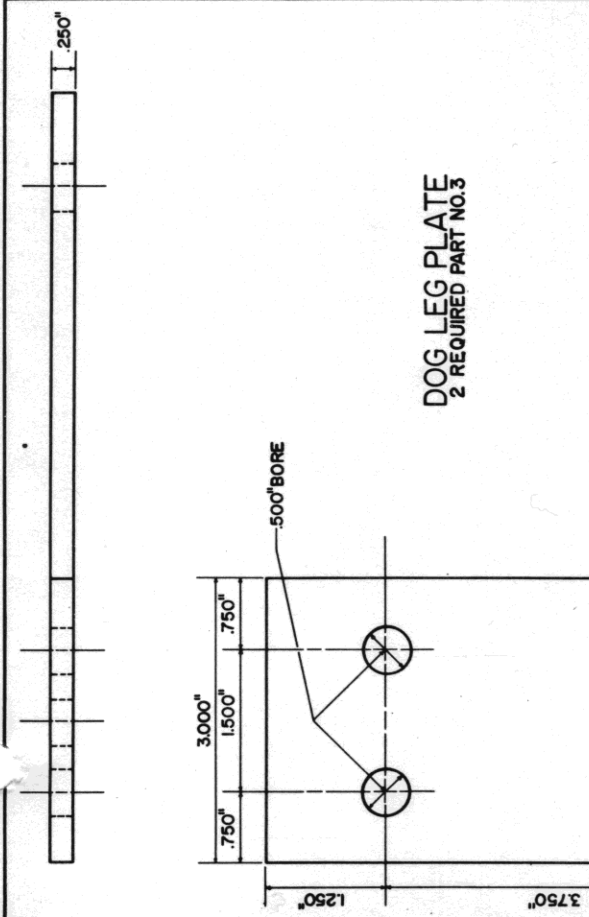
**STEERING ROD**  
1 REQUIRED PART NO. 7



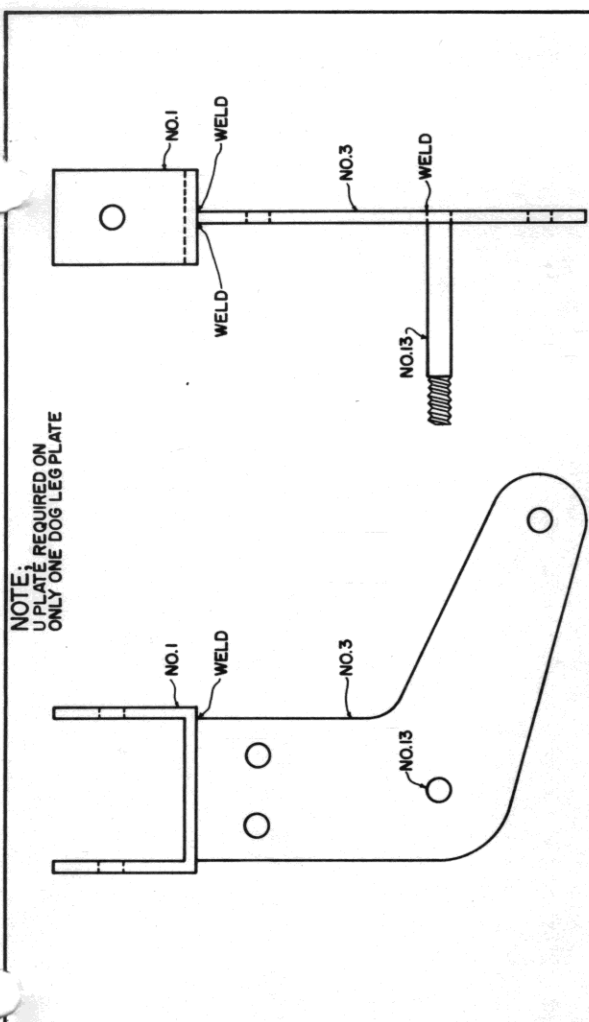
**WASHER**  
4 REQUIRED PART NO. 28







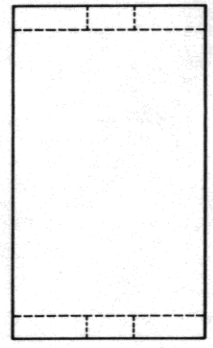
**DOG LEG PLATE**  
2 REQUIRED  
PART NO. 3



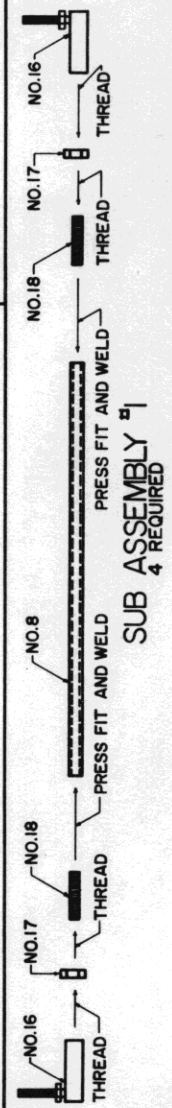
**TONGUE MOUNTING U-PLATE**  
1 REQUIRED  
PART NO. 1

NOTE: 1 REQUIRED ON U-PLATE ONLY ONE DOG LEG PLATE

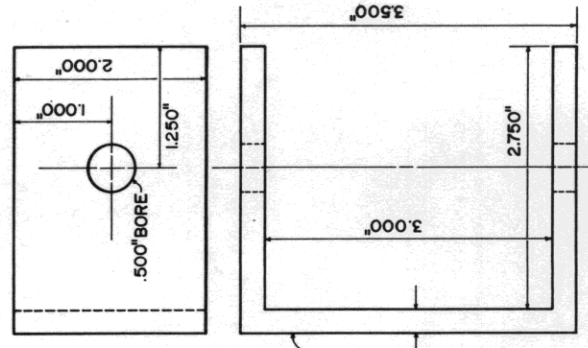
**SUB ASSEMBLY #2**  
2 REQUIRED



**TIE ROD**  
4 REQUIRED  
PART NO. 8



**SUB ASSEMBLY #1**  
4 REQUIRED



**SUB ASSEMBLY #2**  
2 REQUIRED